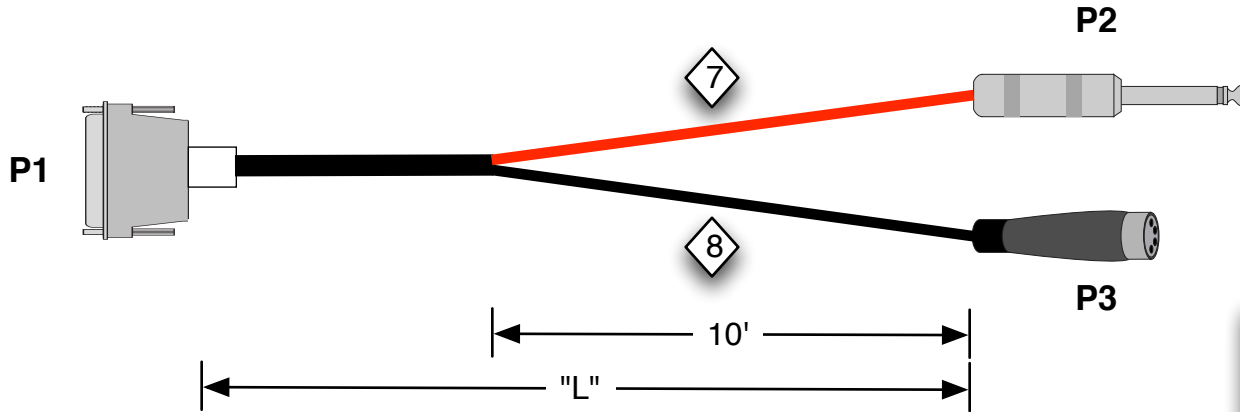


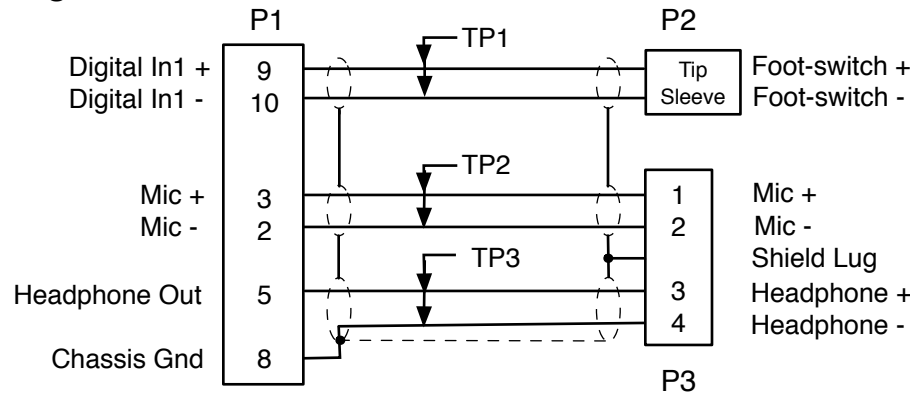
**Cable Layout:**



CA-D15M-Y-X4F-Q2M-L-A\_02

Length in feet


**Wiring Information:**



**Notes:**

1. Use high quality supplier such as AMP or equivalent.
2. P3: Use Neutrik 4pin XLR female connector only. No Substitutions.
3. P2: 1/4" phono male connector
4. Use Canare MR202-4AT audio cable.
5. Cable length "L" defined by length field of part number ordered
6. Tie ALL shields to Pin 8 at the D15 end. Pairs must be connected as shown. Unused pairs are not connected.
- 7 Apply red braided sleeving from 'Y' split to male connector
- 8 Apply black braided sleeving from 'Y' split to female connector

Rev	Date	Originator	Description
01	5-24-05	NAK	Original release
02	4-20-09	CJA	Added information table

 <b>ADVANCED SIMULATION TECHNOLOGY inc.</b> 500A Huntmar Park Drive, Herndon, VA 20170 www.asti-usa.com	
Cage Code	OVSFW3
Title	Audio Cable IRIS to Headset and Footswitch
Dwg #	CA-D15M-Y-X4F-Q2M-L-A_02
Sheet	1 of 1

Industry connector Sub Group	ASTi Part Number Sub Group	Source Device	ASTi Part Number	Current Revision Number	Description & Case Use	Special Notes
DB15	D15*	ACU, ACU2	CA-D15M-Y-X4F-Q2M-L-A	02		