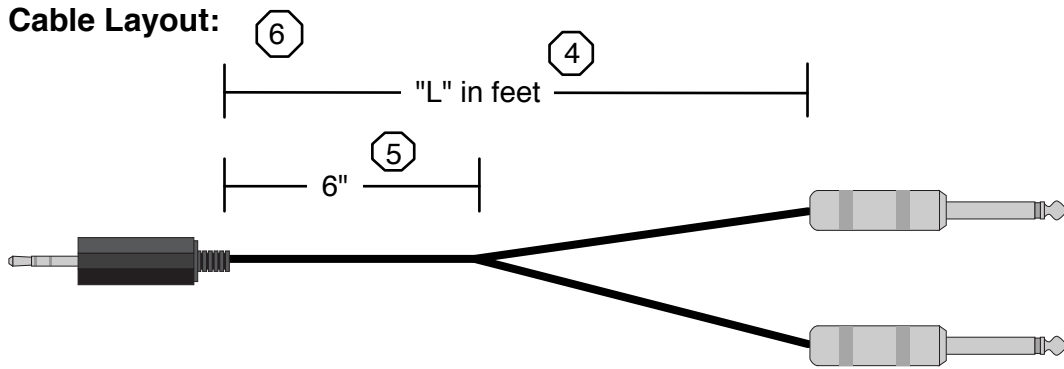


Cable Layout:



P/N:CA-P3M-Y-Q2M-Q2M-L-A_02

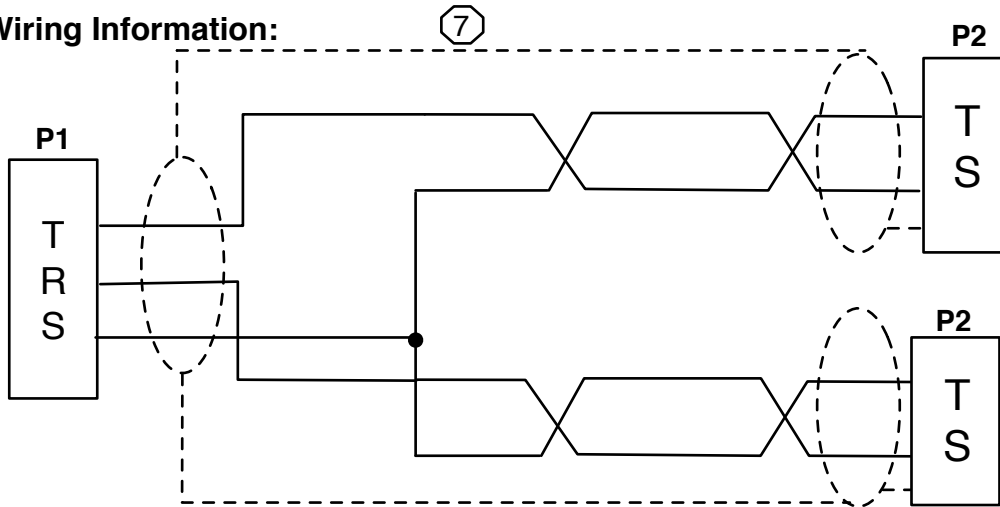
Length in Feet

Item	Qty	RefDes	P/N	Mfg	Description	Notes
1	1	P1	-	-	3.5 mm Male	1
2	1	P2	-	-	1/4" Phone Plug (male), Mono	2
3	AR	-	-	-		3


Notes:

1. Use Switchcraft P/N 35HDN series or equivalent.
2. Use Switchcraft P/N 28X series or equivalent
3. Use low capacitance, inimically shielded, twisted pair, high flex, audio cable.
4. cable lenght "L" defined by length field of part number ordered.
5. Use heat wrap to secure cables in place.
6. Wiring as shown in schematic. Please note additional assembly instructions.
7. Twisted pair configuratoin as shown

Wiring Information:



Rev	Date	Originator	Description
-	05/08/01	LMB	Original Release
02	04/17/09	JBN	Added table, converted to .graffle, made pretty

		ADVANCED SIMULATION TECHNOLOGY inc. 500A Huntmar Park Drive, Herndon, VA 20170 www.asti-usa.com
Cage Code	OVFW3	
Title	Audio Interface Cable, 3.5 mm Male to 1/4" Phono plug	
Dwg #	CA-P3M-Y-Q2M-Q2M-L-A_02	
Sheet	1 of 1	

Industry Connector Sub Group	ASTi Part Number Sub Group	Source Device	ASTi Part Number	Current Revision Number	Description & Use Case	Special Notes
3.5mm	P2*, P3*		CA-P3M-Y-Q2M-Q2M-L-A	02		