

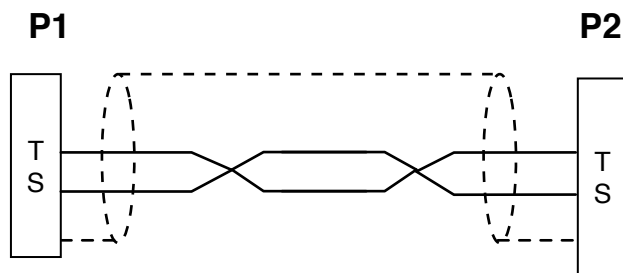
## Cable Layout:

P/N: CA-Q2M-Q2M-L-A\_02



Length in Feet

## Wiring Information:



### Notes:


1. Use Switchcraft P/N 28X series or equivalent.
2. Use low capacitance, inimically shielded, twisted pair, high flex, audio cable
3. Cable length "L" defined by length field of part number ordered.
4. Wiring as shown in schematic. Please note additional assembly instructions.
5. Twisted pair configuration as shown.

### Assembly Notes

1. P1: Male, 1/4-Inch Phone, 2 Conductor.
2. P2: Male, 1/4-Inch Phone, 2 Conductor.
3. Cable: Low capacitance, shielded, high flex, audio cable. Canare P/N: L-2E5, or equivalent
4. Apply shrink tube if necessary to fill P2 cable entry hole.
5. Cable Length specified by value of L in P/N. Units are in feet.
6. Wire as shown in schematic - note drain wire connections.

\*\*\* Cable use: 1/4" to footswitch (or other switch) \*\*\*

Rev	Date	Originator	Description
01	11-05-05	NKW	Original release - 1/4" to foorswitch
02	04/20/09	JBN	added chart, made pretty

		ADVANCED SIMULATION TECHNOLOGY inc. 500A Huntmar Park Drive, Herndon, VA 20170 <a href="http://www.asti-usa.com">www.asti-usa.com</a>
Cage Code	OVFW3	
Title	Audio Interface Cable, - 1/4" to 1/4" TS phono plug	
Dwg #	CA-Q2M-Q2M-L-A_02	
Sheet	1 of 1	

Industry Connector Sub Group	ASTi Part Number Sub Group	Source Device	ASTi Part Number	Current Revision Number	Description & Use Case	Special Notes
1/4"	Q2*, Q3*		CA-Q2M-Q2M-L-A	02		