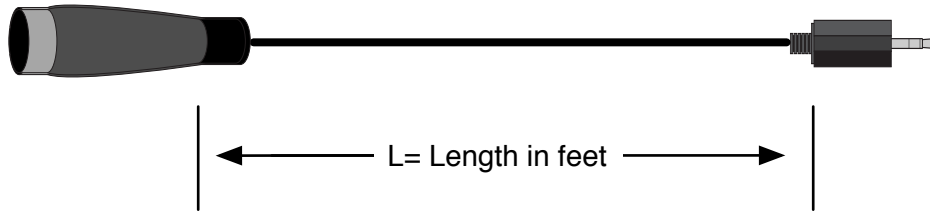
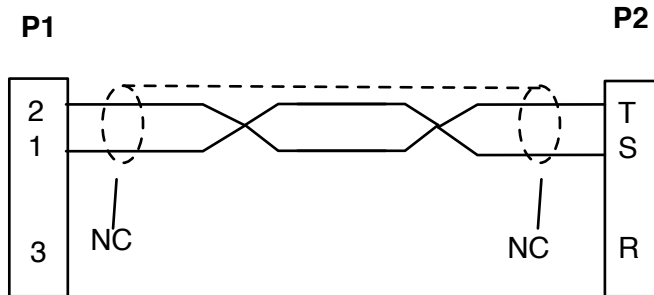


**Cable Layout:**

**P/N: CA-X3M-P3M-L-A\_02**




**Wiring Information:**



***Pins Not Shown Are Unused***

- Assembly Notes:**
1. P1: Use male, 3pin, In-Line XLR connector.
  2. P2: Use (Switchcraft P/N 35HDNN or equivalent). Equivalent part will include: nickel plated / knurled shell, 3.5mm stereo (TRS) plug, solder lugs, cable clamp
  3. Use high quality, low capacitance, individually shielded, twisted pair, audio cable.
  4. Apply shrink tube if necessary to fill P@ cable entry hole.
  5. Cable length specified by value of L in part number. Units are feet.
  6. Twisted pair configuration as shown.
  7. Leave shield unconnected but accessible at both P1 and P2. Insulate drain wire to ensure it does not touch other wires.

Rev	Date	Originator	Description
n/a	04/11/01	DEC	Original Release
02	04/10/09	JBN	converted to .graffle and made pretty; added chart

		ADVANCED SIMULATION TECHNOLOGY inc. 500A Huntmar Park Drive, Herndon, VA 20170 <a href="http://www.asti-usa.com">www.asti-usa.com</a>
Cage Code	OVFW3	
Title	Audio Interface Cable - 3pin Male XLR to 3.5 mm Plug	
Dwg #	CA-X3M-P3M-L-A_02	
Sheet	1 of 1	

Industry Connector Sub Group	ASTi Part Number Sub Group	Source Device	ASTi Part Number	Current Revision Number	Description & Use Case	Special Notes
XLR3	X3*		CA-X3M-P3M-L-A	02		