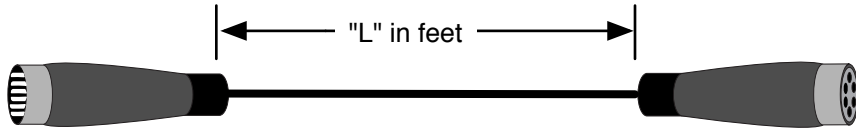


**Cable Layout:**

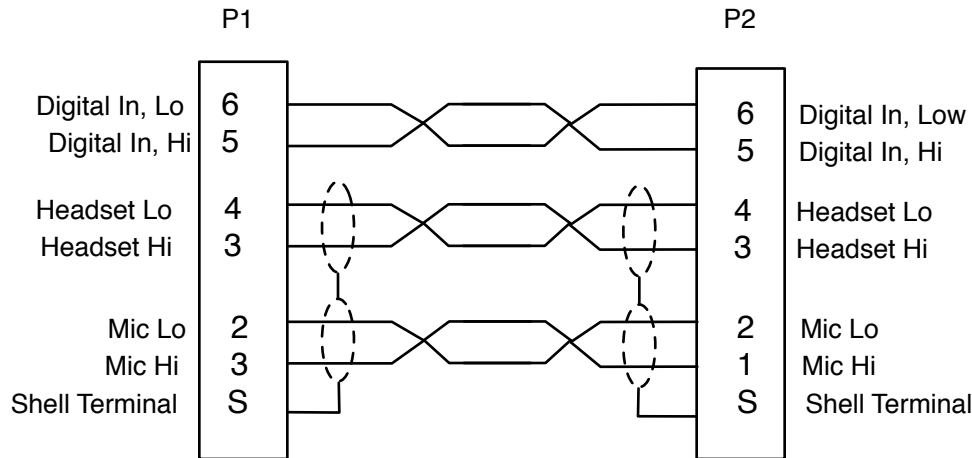
**P/N: CA-X6M-X6F-L-A\_02**

*Length in Feet*



Item	Qty	RefDes	P/N	Mfg	Description	Notes
1	1	P1	-	-	6 Pin XLR Male	1
2	1	P2	-	-	6 Pin XLR Female	2
3	AR	-				3


**Wiring Information:**



**Notes:**

1. Use Neutrik P/N NC6MX or equivalent.
2. Use Neutrik P/N NC6FX
3. Use low capacitance, inimically shielded, twisted pair, high flex, audio cable.
4. Cable length "L" defined by length field
5. Wiring as shown in schematic. Please note additional assembly instructions.
6. Twisted pair configuration as shown. Terminate Headset and Mic Shields to Shell Terminal. Digital In pair does not require shield termination.

Rev	Date	Originator	Description
01	02/25/02	JPN	Original Release
02	04/14/09	JBN	Added chart, made pretty

 <b>ADVANCED SIMULATION TECHNOLOGY inc.</b> 500A Huntmar Park Drive, Herndon, VA 20170 www.asti-usa.com		
		Cage Code
Title	Audio Interface Cable, 6 Pipn, XLR Male to 6 Pin XLR Female	
Dwg #	CA-X6M-X6F-L-A_02	
Sheet	1 of 1	

Industry Connector Sub Group	ASTi Part Number Sub Group	Source Device	ASTi Part Number	Current Revision Number	Description & Use Case	Special Notes
XLR6	X6*		CA-X6M-X6F-L-A	02		