



**Advanced Simulation Technology inc.**  
500 A Huntmar Park Drive  
Herndon, Virginia 20170 U.S.A.  
Tel. (703)471-2104 • Fax. (703)471-2108  
[www.asti-usa.com](http://www.asti-usa.com)

# **ASTi**

## **Telestra 4 ACE Studio**

### **Cold Start Procedure**

**Document: DOC-02-TEL4-ASCS-1**



Product Name: Telestra 4 ACE Studio

ASTi Telestra 4 ACE Studio Cold Start Procedure

© Copyright ASTi 2010-11.

Restricted Rights: Use, duplication, or disclosure by the Government is subject to restrictions as set forth in subparagraph (c)(1)(ii) of the Rights in Technical Data and Computer Software clause at DFARS 252.227-7013.

This material may be reproduced by or for the U.S. Government pursuant to the copyright license under the clause at DFARS 252.227-7013 (1994).

ASTi

500 A Huntmar Park Drive

Herndon, VA 20170

Red Hat® Enterprise Linux®

Red Hat® Subscription

ASTi's ACE Studio software is designed to run on an installation of Red Hat® Enterprise Linux® client. This ensures optimal interoperability with ASTi's ACE Studio software, host routing software and external communications servers. As such included in the Cold Start DVDs is the complete installation of Red Hat® Enterprise Linux® client. This software **is not** activated to a current Red Hat subscription. It is the end users responsibility to activate their subscription and connect to the Red Hat Network. The Red Hat subscription will provide the end user with support, maintenance, software and security updates. For details on Red Hat activation see the Red Hat web site:

<https://www.redhat.com/apps/activate>

Export Restriction

Countries other than the United States may restrict the import, use, or export of software that contains encryption technology. By installing this software, you agree that you shall be solely responsible for compliance with any such import, use or export restrictions. For full details on Red Hat export restrictions please visit:

<http://www.redhat.com/licenses/export>

# Table of Contents

<b>1.0. Overview</b>	<b>1</b>
<b>2.0. Requirements</b>	<b>2</b>
<b>2.1. Hardware</b>	<b>3</b>
<i>Figure 1: Footprint Computer System Connections</i>	3
<i>Figure 2: 2U Platform Connections</i>	3
<b>3.0. Instructions to Verify DVD Contents</b>	<b>4</b>
<b>4.0. ACE Studio Cold Start Procedure</b>	<b>5</b>
<b>4.1. Installing RHEL Software</b>	<b>5</b>
<b>4.2. Installing ACE Studio Software</b>	<b>7</b>
<b>5.0. Memory Test</b>	<b>9</b>
<b>Appendix A: Installation Instructions for Older Software Versions</b>	<b>11</b>
Installing RHEL Software	11
Installing ACE Studio Software	11



## 1.0. Overview

The cold start procedure described in this document allows users to build ACE Studio systems from scratch. There are three main reasons for using the cold start procedure:

1. Installing the latest software version
2. Rebuilding a damaged hard disk
3. Creating spare hard disks



***Warning: Performing a system cold start to upgrade the software will cause complete erasure of the system hard drive.***

## 2.0. Requirements

This cold start procedure is for installing ACE Studio software on the Development Workstation.

**Note:** To install ACE Studio on a virtual machine see the ACE Studio VM Quick Start Guide (DOC-01-ASVM-QSG-4).

You will need the following items:

- Small footprint PC or 2U platform with removable hard drive
- ASTi DVD
- RHEL DVD
- Power connection
- Connected keyboard, monitor, and mouse
- *Optional* ASTi Information Assurance (IA) DVD



**Caution:** Remove all external drives connected to the system before starting the cold start procedure. Failure to do so may result in erasure of the drive.

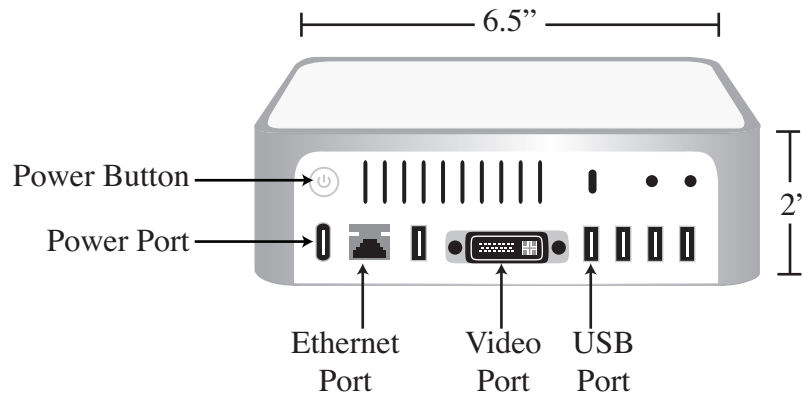
## 2.1. Hardware

The Studio Development Workstation is available on a small footprint computer system or the 2U platform with removable hard drive.

The small footprint computer system is configured with a single ethernet port and DVD drive. This system requires that the monitor connect with the DVI cable not the 15-pin VGA cable. Ensure that the monitor is in DVI mode by pressing the left button, Input Source, on the monitor.

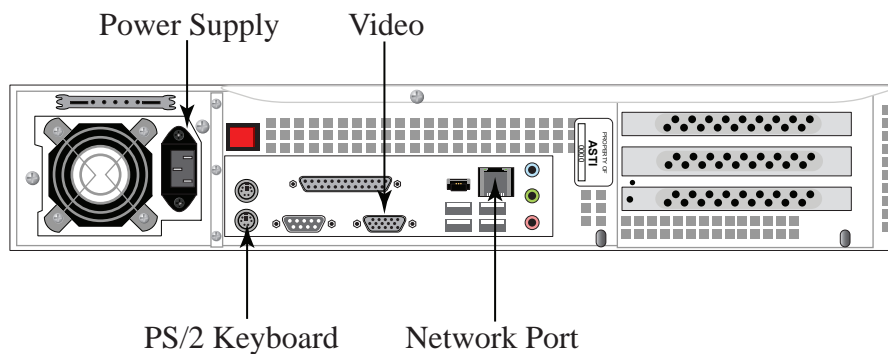
**Important:** Do not use the third USB port from the left.

**Note:** The small footprint computer system does not support the memtest.



*Figure 1: Footprint Computer System Connections*

The 19" 2U rackmount platform is configured with a single ethernet port, removable hard drive and DVD Drive.



*Figure 2: 2U Platform Connections*

### 3.0. Instructions to Verify DVD Contents

Every ACE software release incorporates an MD5 checksum of the DVD's contents, allowing customers to verify the integrity of the installation media. The DVD contents verification is *optional* and not required for the Cold Start Procedure. If DVD problems are suspected, complete the DVD verification. The verification will fail if any file on the DVD is unreadable due to scratches, marks, etc. The DVD contents only needs verification one time, whether Cold Starting one or several systems with the same DVD.

To perform the check, users must have access to the sh shell and md5sum executable. *The ASTi development workstation provides these resources by default, and is the recommended computer to use for media verification.*

The following instructions are for DVD verification using the development workstation.

1. Power on the development workstation, as it boots insert the **ASTi DVD** into the disk drive within 10 seconds of powering on. (If the development workstation boots from the hard drive, reboot the system and hold down the 'alt' key as it restarts.)

2. At the command prompt, enter:

```
studio mediacheck
```

3. The prompt will read "CD Not Found" as the system ejects **ASTi DVD**. Remove the DVD.
4. Insert the **RHEL DVD** and select 'Ok'.
5. The system prompt opens for the DVD media check. Select 'Test' to begin the media check.

Wait approximately five to ten minutes for test completion.

6. Result should read "**Media Check Passed**," if so then press 'Ok'.
7. The DVD will eject from the disk drive. *Important: Failure to remove the DVD after verification will result in complete erasure and reformatting of your hard disk the next time the system is booted.*
8. The prompt will ask if any other media needs to be checked.
9. Repeat Steps 1-7, except in step 4 reinsert the **ASTi DVD**.

If the DVD verification was successful, proceed with the cold start procedure. If DVD verification failed, however, please contact ASTi immediately to receive new software DVDs.

## 4.0. ACE Studio Cold Start Procedure



**Warning:** ASTi highly recommends that there are no KVM switches connected to the system during the cold start process. Or at a minimum if you run into an issue with a KVM, disconnect it and then try the cold start process again.

### 4.1. Installing RHEL Software

The following steps are for software versions 4.10 and above.

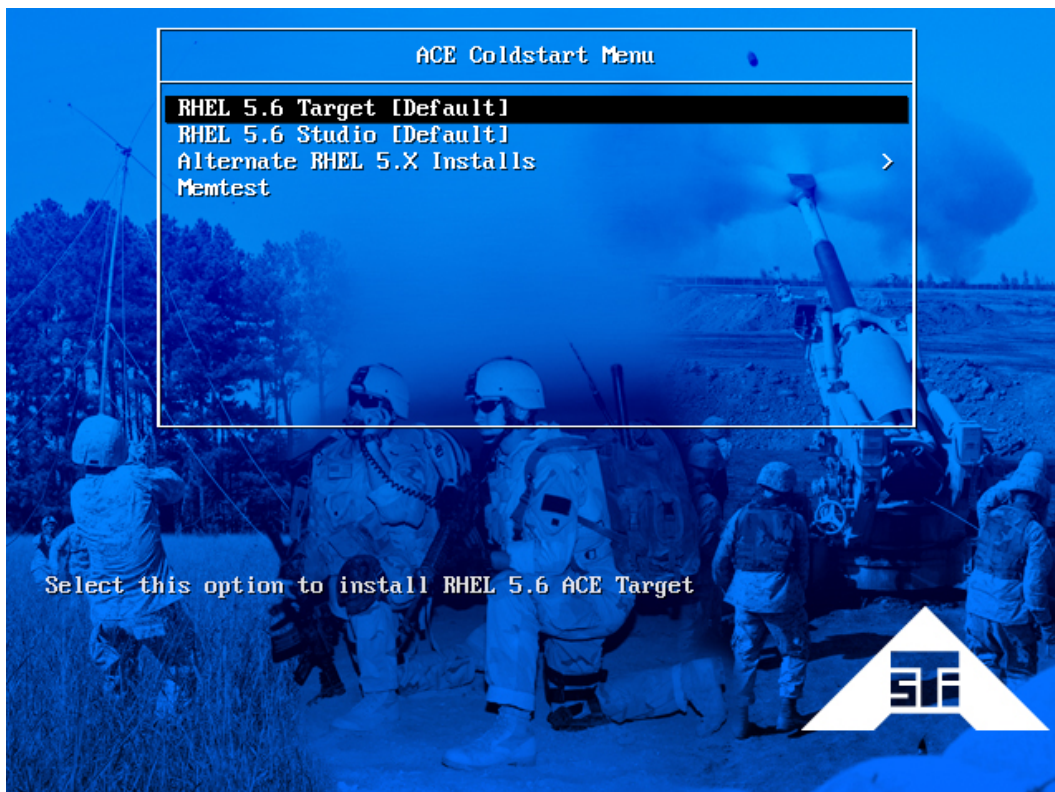
1. Power on the system via the power switch.
  - 1a. If you are cold starting the **2U platform**, insert the **ASTi DVD** immediately, and ensure that the system boots off the **ASTi DVD**.
  - 1b. If you are cold starting the small footprint computer system, hold down the '**ALT**' key while inserting the **ASTi DVD** and ensure that the system boots off the DVD.

2. At the prompt, select

RHEL Studio [Default]

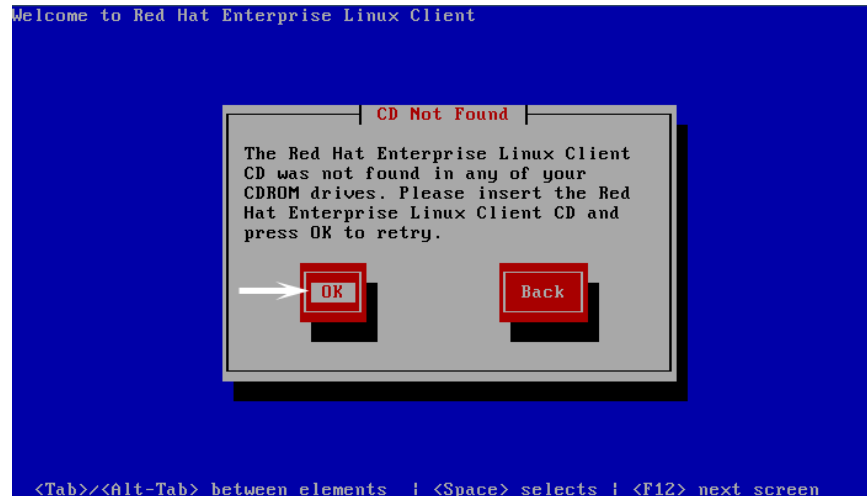
and press enter.

Note: For ACE software versions 4.30 and previous, the prompt screen is different. At the prompt type "studio" and press enter.



*Optional:* Alternate RHEL versions are available. Select the installation that corresponds with your system (i.e. Studio).

3. The prompt will read “**CD Not Found**” and the system will eject the **ASTi DVD**. Remove the DVD.



4. Insert the **RHEL DVD** and select ‘**Ok**’.
5. Wait for the installation to complete.
6. The DVD will automatically eject, remove the DVD and select “**Reboot.**”



## 4.2. Installing ACE Studio Software

The following steps are for software versions 4.5 and above.

**Note:** To install ACE Studio on a virtual machine see the ACE Studio VM Quick Start Guide (DOC-01-ASVM-QSG-4).

Before proceeding with this installation, complete section **4.1. Installing RHEL Software**.

1. Login with:

```
username: root          password: abcd1234
```

2. Insert the **ASTi DVD**.

3. To open the terminal navigate to Applications > Accessories > Terminal.

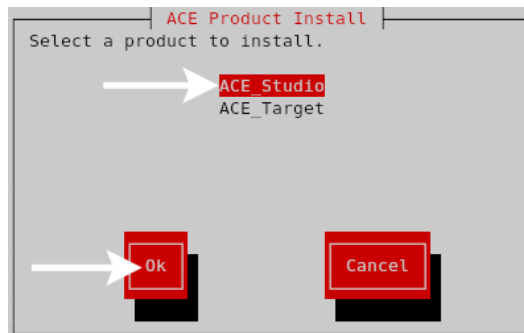
4. To mount the DVD type the following in the terminal:

```
mount /dev/dvd /media
```

5. At the prompt type:

```
sh /media/install
```

6. The prompt will read, 'Select a product to install.' Use the up and down arrow keys to select '**ACE Studio**'. Then using *tab* or right arrow key select '**OK**'.



**Note:** Screen may vary depending on software version.

7. Prompt will read, 'Do you wish to install ACE Studio?' Select '**Yes**' and wait for the installation to complete.

8. Then type:

```
eject /media
```

9. Remove the DVD from the drive.

10. Type:

```
reboot
```

to reboot the system.

For step-by-step instructions on setting up the IP address, see the Telestra 4 Quick Start Guide (DOC-01-TEL4-QSG-1) section **2.0. Setting up the ACE Studio Development Workstation**.

For step-by-step instructions on installing the ASTi ACE Information Assurance (IA) software, see the **Telestra 4 Information Assurance Installation Guide (DOC-01-TEL4-IA-IG-1)**.

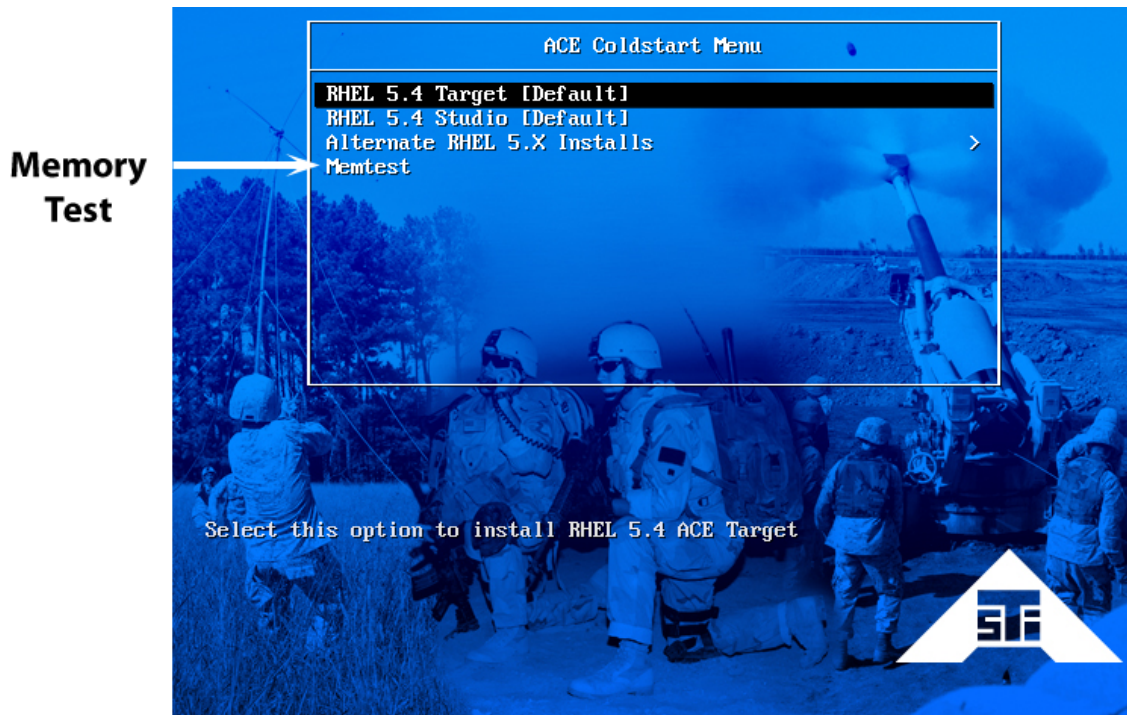
## 5.0. Memory Test

The memory test is recommended for systems that are misbehaving. Misbehaving symptoms include system lockup or freezing, random rebooting, or graphics/screen distortion. ASTi recommends running this test through several times before declaring the system good from a memory perspective. ASTi recommends running the test over night.

### ACE Software Version 4.31 and After

Follow the steps below to complete the memory test.

1. Power on the computer.
2. Insert the **ASTi DVD** and reboot by pressing the “**Reset**” button on the front of the computer.
3. At the prompt, select  
Memtest  
and press enter.



**ACE Software versions 4.10 to 4.30**

Boot the system with the ASTi DVD (the one that is used for the Cold Start procedure) and then start the utility by typing "memtest" at the prompt (instead of "studio" or "target"). It is recommended that this runs through several times before declaring the system good from a memory perspective. ASTi recommends running the test over night.

Execute the Memory Test

1. Power on the computer.
2. Insert the ASTi DVD and reboot.
3. At the prompt, type: memtest
4. Let test run for an extended period of time or overnight.

## Appendix A: Installation Instructions for Older Software Versions

### Installing RHEL Software

These steps are for ASTi software versions 4.1 – 4.9.

1. Power on the system via the power switch.
2. Hold down the ‘ALT’ key while inserting the **RHEL DVD** (previously titled **ASTi DVD 1**). *Skip this step if you are cold starting the 2U platform.*
3. Select the **DVD Windows** icon to boot from the DVD.
4. At the prompt type  
`studio`
5. Wait for the installation to complete.
6. The DVD will automatically eject, remove the DVD and select “**Reboot.**”

### Installing ACE Studio Software

These steps are for ASTi software versions 4.1 – 4.4.

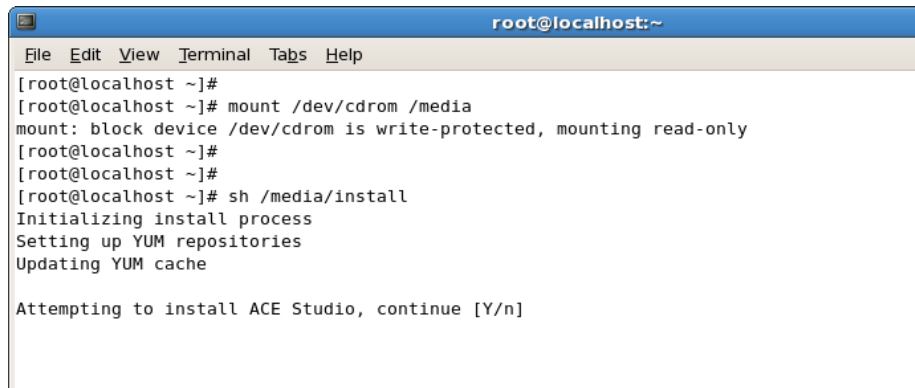
**Note:** If you are installing ACE software versions 4.5 or above please see section “4.2. Installing ACE Software.”

Before proceeding with this installation, complete section “**Installing RHEL Software**” located in this Appendix.

1. Login with:  
`username: root            password: abcd1234`
2. Insert the **ASTi DVD** (previously titled **ASTi DVD 2**).
3. Open a terminal by navigating to **Applications > Accessories > Terminal**.
4. To mount the DVD type:  
`mount /dev/dvd /media`

- At the prompt type:

```
sh /media/install
```



```

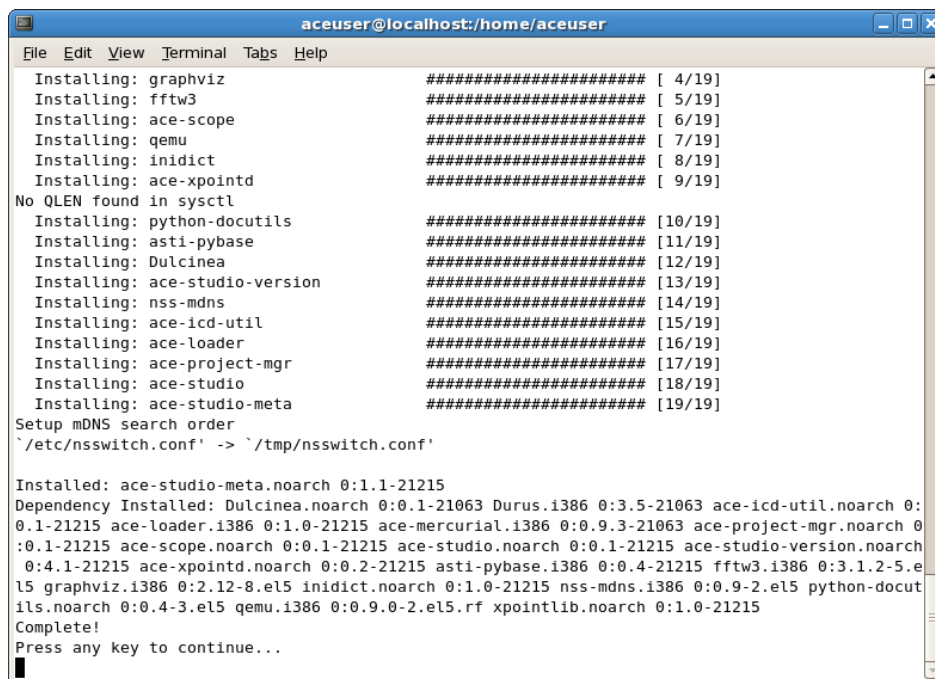
root@localhost:~
File Edit View Terminal Tabs Help
[root@localhost ~]#
[root@localhost ~]# mount /dev/cdrom /media
mount: block device /dev/cdrom is write-protected, mounting read-only
[root@localhost ~]#
[root@localhost ~]#
[root@localhost ~]# sh /media/install
Initializing install process
Setting up YUM repositories
Updating YUM cache

Attempting to install ACE Studio, continue [Y/n]

```

- The prompt will read “Attempting to install ACE Studio, continue [Y/N]” press ‘Y’ and then press enter.

The screen below will display after the installation is complete.



```

aceuser@localhost:/home/aceuser
File Edit View Terminal Tabs Help
Installing: graphviz ##### [ 4/19]
Installing: fftw3 ##### [ 5/19]
Installing: ace-scope ##### [ 6/19]
Installing: qemu ##### [ 7/19]
Installing: inidict ##### [ 8/19]
Installing: ace-xpointd ##### [ 9/19]
No QLEN found in sysctl
Installing: python-docutils ##### [10/19]
Installing: asti-pybase ##### [11/19]
Installing: Dulcinea ##### [12/19]
Installing: ace-studio-version ##### [13/19]
Installing: nss-mdns ##### [14/19]
Installing: ace-icd-util ##### [15/19]
Installing: ace-loader ##### [16/19]
Installing: ace-project-mgr ##### [17/19]
Installing: ace-studio ##### [18/19]
Installing: ace-studio-meta ##### [19/19]
Setup mDNS search order
`/etc/nsswitch.conf' -> `/tmp/nsswitch.conf'

Installed: ace-studio-meta.noarch 0:1.1-21215
Dependency Installed: Dulcinea.noarch 0:0.1-21063 Durus.i386 0:3.5-21063 ace-icd-util.noarch 0:
0.1-21215 ace-loader.i386 0:1.0-21215 ace-mercurial.i386 0:0.9.3-21063 ace-project-mgr.noarch 0
:0.1-21215 ace-scope.noarch 0:0.1-21215 ace-studio.noarch 0:0.1-21215 ace-studio-version.noarch
0:4.1-21215 ace-xpointd.noarch 0:0.2-21215 asti-pybase.i386 0:0.4-21215 fftw3.i386 0:3.1.2-5.e
15 graphviz.i386 0:2.12-8.el5 inidict.noarch 0:1.0-21215 nss-mdns.i386 0:0.9-2.el5 python-docut
ils.noarch 0:0.4-3.el5 qemu.i386 0:0.9.0-2.el5.rf xpointlib.noarch 0:1.0-21215
Complete!
Press any key to continue...

```

- After the installation is complete type:

```
eject
```

- Close the terminal.
- Then navigate to **System > Shutdown** and click “**Restart**” to reboot.

**Note:** The ACE Studio default login username and password are as follows:

```
Username: aceuser Password: aceuser
```